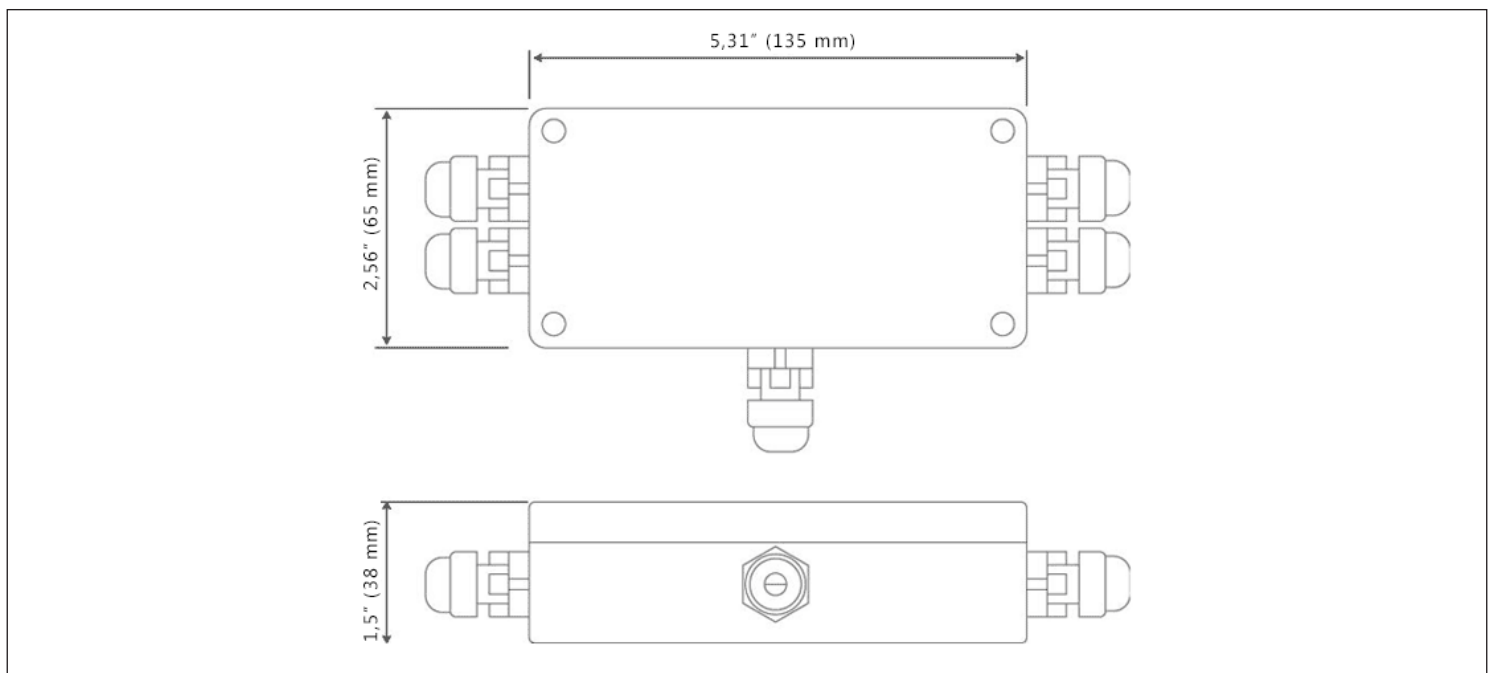


**Special features**

- Junction box for parallel connection of up to 4 load cells;
- Individual setting per load cell by means of trimpots, making the setting process faster and more precise;
- Setting Range: approximately 4.2% of the outlet signal, for load cells with 350 ohms impedance;
- Unlimited possibility of number of connections, being able to use several junction boxes connected in series.
- Excellent thermal stability;
- Connection of cables from 0,14" (3.5mm) up to 0,28" (7 mm) in diameter;
- Compact size;
- Aluminum die casting housing;
- Degree of protection IP-66;

DIMENSIONS

(inches and mm)

**Weightech USA**

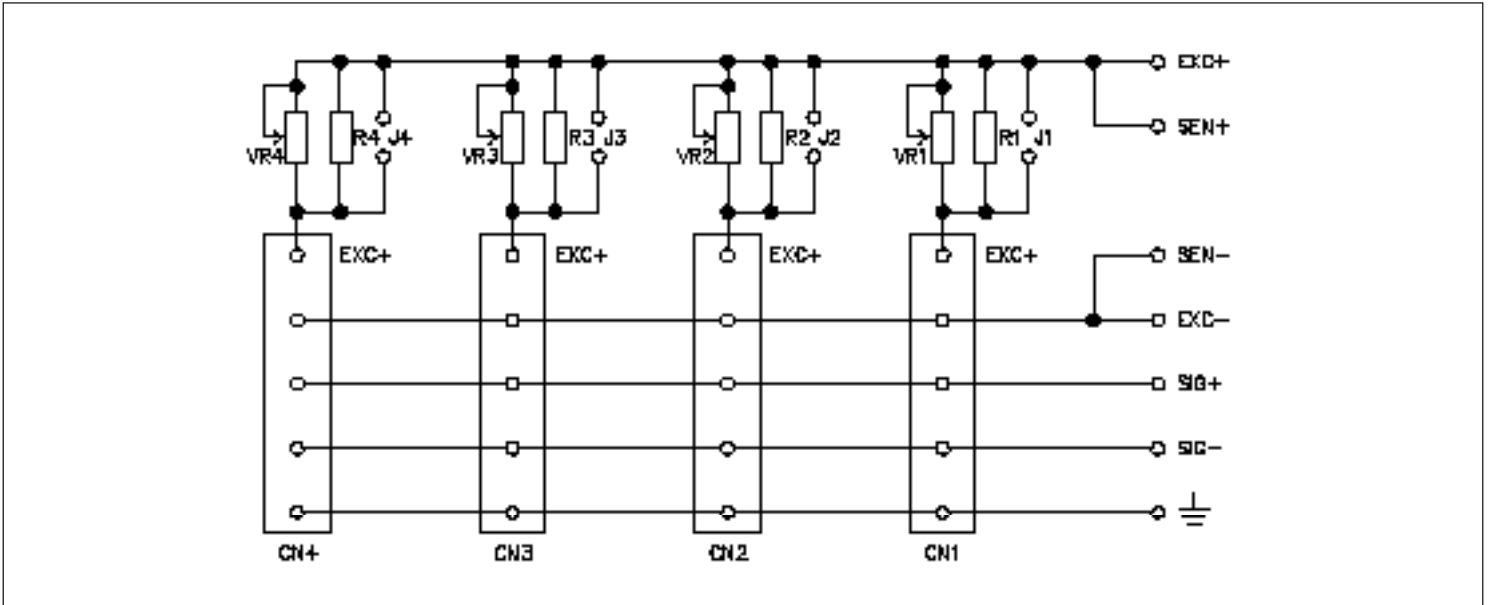
www.weightechUSA.com • sales@weightechUSA.com

DAVIE, FL
10384 SR 84, #6
Davie, FL 33324
+1 954-666-0877

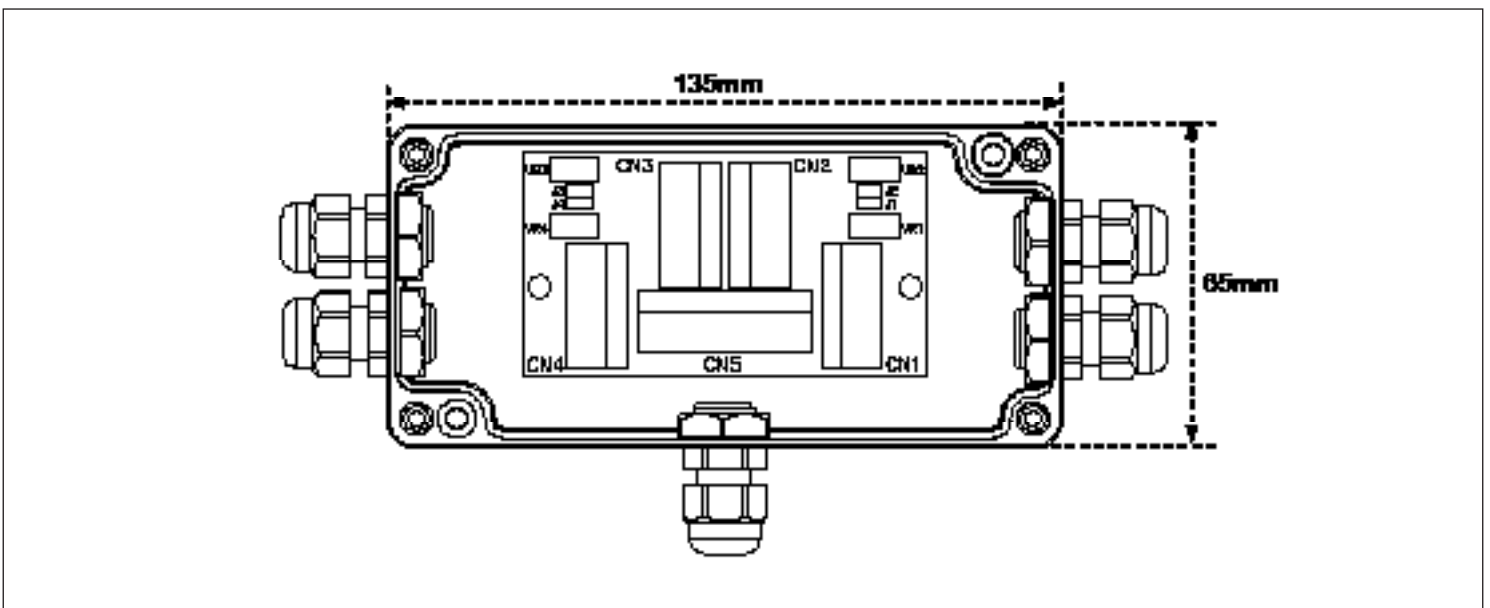
SÃO PAULO, SP
Av. General Mac Arthur, 96
CEP 05338-000, São Paulo, SP
+55 11 3763-5013

FLORIANÓPOLIS, SC
Rod. Virgílio Várzea, 3110, Sala 1
CEP 88032-001, Florianópolis, SC
+55 48 3331-3200

CONNECTION

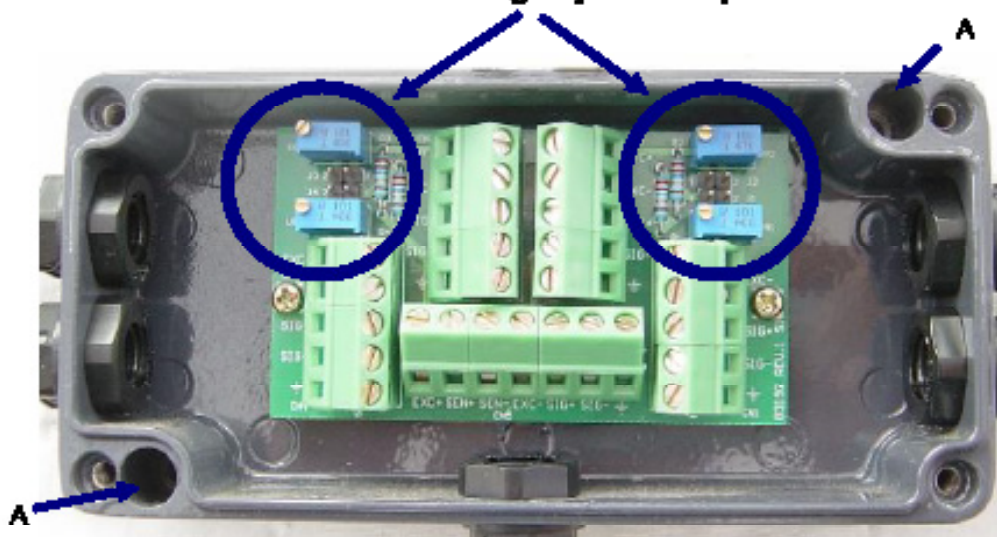


COMPONENTS POSITION



CORNERING INSTRUCTIONS

The cornering PCB is housed in an IP67 sealed aluminum die-cast box which is secured to the underside of the platform via the fixing holes marked 'A' on the photograph (NOTE: the holes may need to be drilled through prior to installation). The load cell cables are connected to individual 5 way terminal blocks and each load cell connection is provided with a trim pot for cornering adjustment. The junction box supports the connection of a 6 wire indicator cable to facilitate reference return via the 7 way terminal block for the indicator cable. The trim pot adjustment provides up to a maximum of 4.2% of cornering adjustment for a 350 ohm load cell. If cornering adjustment is not required then the adjustment pots can be made inoperative by fitting jumpers to J1, J2, J3 and J4.

Location of cornering adjustment pots**CORNERING ADJUSTMENT**

1. Before calibration starts ensure that all four jumpers are removed from J1, J2, J3 & J4 and that all trim pots are adjusted so that they are not influencing the cornering. This is achieved by turning the pots fully anti-clockwise at least 20 turns or until the end stop is reached indicated by a clicking sound.
2. As the trim pots are turned clockwise they will reduce the load cell output. Place the cornering load on all four corners in turn and note the highest reading. Turn the appropriate trim pot clockwise to reduce the highest reading until it is the same as the lowest corner. (VR1 for load cell 1, VR2 for load cell 2, VR3 for load cell 3 & VR4 for load cell 4)
3. Repeat the adjustment as necessary for the other corners until all corners read the same weight when the cornering load is applied.

Weightech USA
www.weightechUSA.com • sales@weightechUSA.com

DAVIE, FL
10384 SR 84, #6
Davie, FL 33324
+1 954-666-0877

SÃO PAULO, SP
Av. General Mac Arthur, 96
CEP 05338-000, São Paulo, SP
+55 11 3763-5013

FLORIANÓPOLIS, SC
Rod. Virgílio Várzea, 3110, Sala 1
CEP 88032-001, Florianópolis, SC
+55 48 3331-3200